





OUR STORY...

The first steps were in 2007, growing swiftly into a prominent reference for the SPA&Wellness Industry within the MEA region and beyond.

Understanding the particular necessities of this part of the world, we provide a local full-set up of designers, architects and consultants, operating from and to the region and beyond, to best respond to the demands of today's fast pace growing market.

OUR TEAM...

With diverse technical backgrounds and expertise our young, dynamic and passionate growing team of 25 colleagues from 9 different nationalities is a perfect example of diversity, a fundamental key element to develop and create inspired and inventive SPA&Wellness solutions. Our innovative vision is however always supported on solid technical knowledge that we imprint in all of our projects.

WHO WE WORK WITH REFERENCES

UAE

- W HOTEL THE PALM JUMEIRAH, DUBAI
- HYATT TIARA HOTEL, PALM JUMEIRAH, DUBAI;
- WESTIN SHEIKH ZAYED ROAD, DUBAI;
- ST. REGIS DUBAI POLO RESORT & CLUB, DUBAI;
- LAPITA AUTOGRAPH COLLECTION, DUBAI PARKS;
- CAYAN TOWER, DUBAI MARINA;
- ARMANI HOTEL, DUBAI;
- ANANTARA RESORT & SPA, THE PALM, DUBAI;
- WALDORF ASTORIA, PALM JUMEIRAH, DUBAI;
- VICEROY HOTEL, PALM JUMEIRAH, DUBAI;
- DAMAC MAISON, DUBAI;
- DAMAC BURJSIDE BOULEVARD, DUBAI;
- PRIVATE SPA PALACE, DUBAI;
- OCEANA, PALM JUMEIRAH, DUBAI;
- MY TRITON, PLATINUM YACHTS, DUBAI;
- RITZ CARLTON GRAND CANAL, ABU DHABI;
- FOUR SEASONS HOTEL, ABU DHABI;
- ABU DHABI COUNTRY CLUB, ABU DHABI;
- ADIA HEALTH & WELLNESS CLUB, ABU DHABI;
- ARMAAM AL REEM ISLAND, ABU DHABI;
- MÖVENPICK HOTEL, ABU DHABI;
- AL BUSTAN COMPLEX, ABU DHABI;
- SHERATON SHARJAH, SHARJAH;
- KHATT HOT SPRINGS, RAS AL KHAIMAH;

KSA

- ROCCO FORTE, HOTEL JEDDAH;
- KEMPINSKI HOTEL, JEDDAH;
- KEMPINSKI HOTEL, RIYADH;
- SHERATON DAMMAM, DAMMAM;
- LUTHAN HOTEL & SPA, RIYADH;
- AL RAHMENEYA HOTEL, RIYADH;

AZERBAIJAN

- GAZELLI HOUSE, BAKU,

QATAR

- WEST BAY PALACE, DOHA
- AL MESSILA HOTEL RESORT, DOHA
- SOLIS HOTEL DOHA, DOHA
- THE GATE TO LIFE, DOHA
- LA BOUTIQUE, DOHA

BAHRAIN

- THE DOMAIN HOTEL MANAMA

EGYPT

- NILE RITZ CARLTON, CAIRO;
- ST. REGIS HOTEL, CAIRO;
- FAIRMONT, CAIRO;
- EMAAR MARASSI, NORTH COAST;
- HILTON LUXOR RESORT & SPA, LUXOR;
- MÖVENPICK HOTEL;
- ELEPHANTINE ISLAND, ASWAN;
- CROWNE PLAZA, SHARM EL SHEIKH;
- LE MERIDIEN HOTEL, GIZEH;

JORDAN

- MÖVENPICK HOTEL, DEAD SEA;
- HILTON JORDAN GATE HOTEL, AMMAN;

KUWAIT

- MÖVENPICK HOTEL, AL BIDAA;
- AL CORNICHE CLUB, KUWAIT;

LEBANON

- MÖVENPICK HOTELS & RESORTS, BEIRUT;
- LIFESTYLE & FITNESS, AL MADA TOWERS, BEIRUT;

OMAN

- MÖVENPICK HOTEL, SALALAH;
- CROWNE PLAZA HOTEL, MUSCAT;

DAMAC

W
HOTELS

Sheraton
HOTELS & RESORTS

WESTIN
HOTELS & RESORTS

ARMANI
Hotels & Resorts

HYATT

W

**WALDORF
ASTORIA**



THE RITZ-CARLTON®

VICEROY
Hotels and Resorts

Kempinski
HOTELIERS SINCE 1897

RF ROCCO
FORTE
HOTELS

EMAAR

L

LANGHAM
&
HOTELS RESORTS

Marriott
HOTELS · RESORTS · SUITES
AUTOGRAPH
COLLECTION™



ST REGIS

Anantara
HOTELS • RESORTS • SPAS

Fairmont
HOTELS & RESORTS



Hilton
HOTELS & RESORTS



FOUR SEASONS
Hotels and Resorts

HOW WE DO IT

CONCEPT

VISION

- Strategic conceptual planning
- Vision to define SPA philosophy
- Space Program accordingly to the above

CONCEPT

- Research & collection of Mood Images for possible design direction
- Concept Design Layout, scale 1:100
- Circulation Diagram

MARKET STUDY

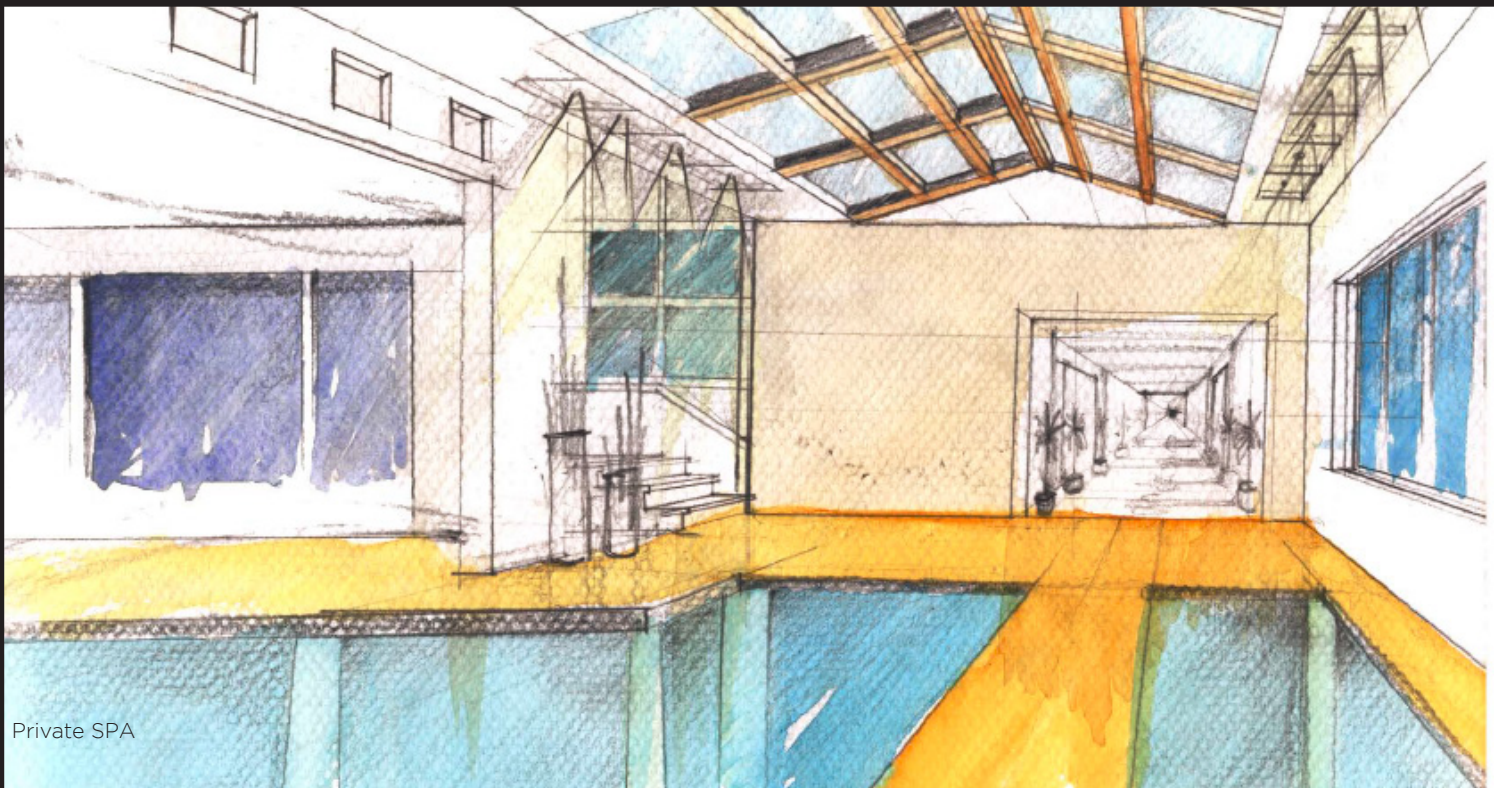
Report with Assumptions, Considerations and Recommendations:

- Cost Estimation on Investment;
- Competition Analysis;
- SWOT Analysis;
- P&L 5 years;
- Cash Flows
- ROI

HAND SKETCHES



Anantara Resort & SPA - DUBAI



Private SPA

HOW WE DO IT

CONCEPT

VISION

- Strategic conceptual planning
- Vision to define SPA philosophy
- Space Program accordingly to the above

CONCEPT

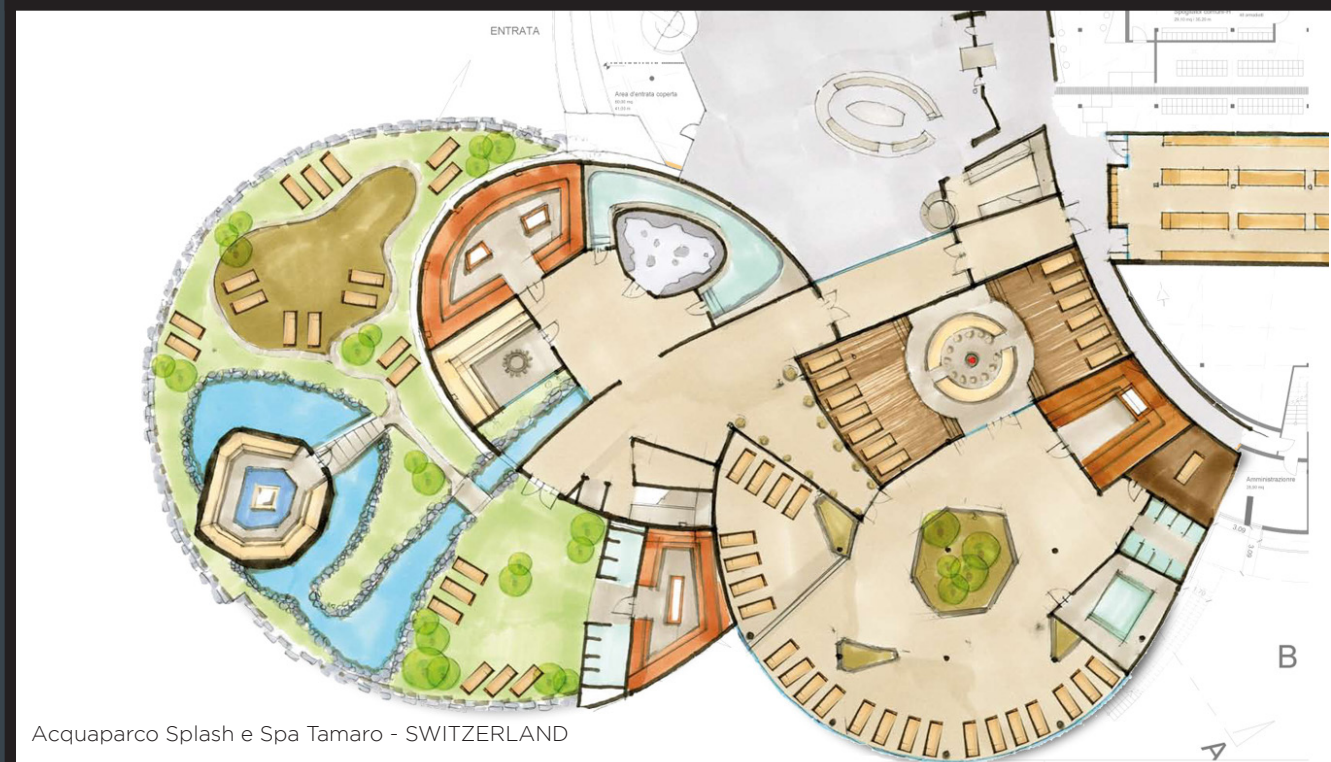
- Research & collection of Mood Images for possible design direction
- Concept Design Layout, scale 1:100
- Circulation Diagram

MARKET STUDY

Report with Assumptions, Considerations and Recommendations:

- Cost Estimation on Investment;
- Competition Analysis;
- SWOT Analysis;
- P&L 5 years;
- Cash Flows
- ROI

LAYOUT



HOW WE DO IT

CONCEPT

VISION

- Strategic conceptual planning
- Vision to define SPA philosophy
- Space Program accordingly to the above

CONCEPT

- Research & collection of Mood Images for possible design direction
- Concept Design Layout, scale 1:100
- Circulation Diagram

MARKET STUDY

Report with Assumptions, Considerations and Recommendations:

- Cost Estimation on Investment;
- Competition Analysis;
- SWOT Analysis;
- P&L 5 years;
- Cash Flows
- ROI

LAYOUT



Sheraton Damman - SAUDI ARABIA

HOW WE DO IT

SCHEMATIC

3D VISUALIZATIONS

INTERIOR & ARCHITECTURAL DESIGN

- General layout
- Section(s)/elevation(s)

MEP ASSISTANCE

- Reflected ceiling plan
- Ceiling heights
- Water supply layout (Only cold/hot water location, pipe size)
- Drainage layout (Only location, size)
- Ventilation layout (Only location of supply and return, room temperature range, airflow, rate and speed)
- Power (Only location of power supply)
- Sound (Only location speakers and source of sound system, location sound control plate)
- Lighting (Only position and type of light, defining control zones)
- Telephone and data (Only location)

3D RENDERS



HOW WE DO IT

SCHEMATIC

3D VISUALIZATIONS

INTERIOR & ARCHITECTURAL DESIGN

- General layout
- Section(s)/elevation(s)

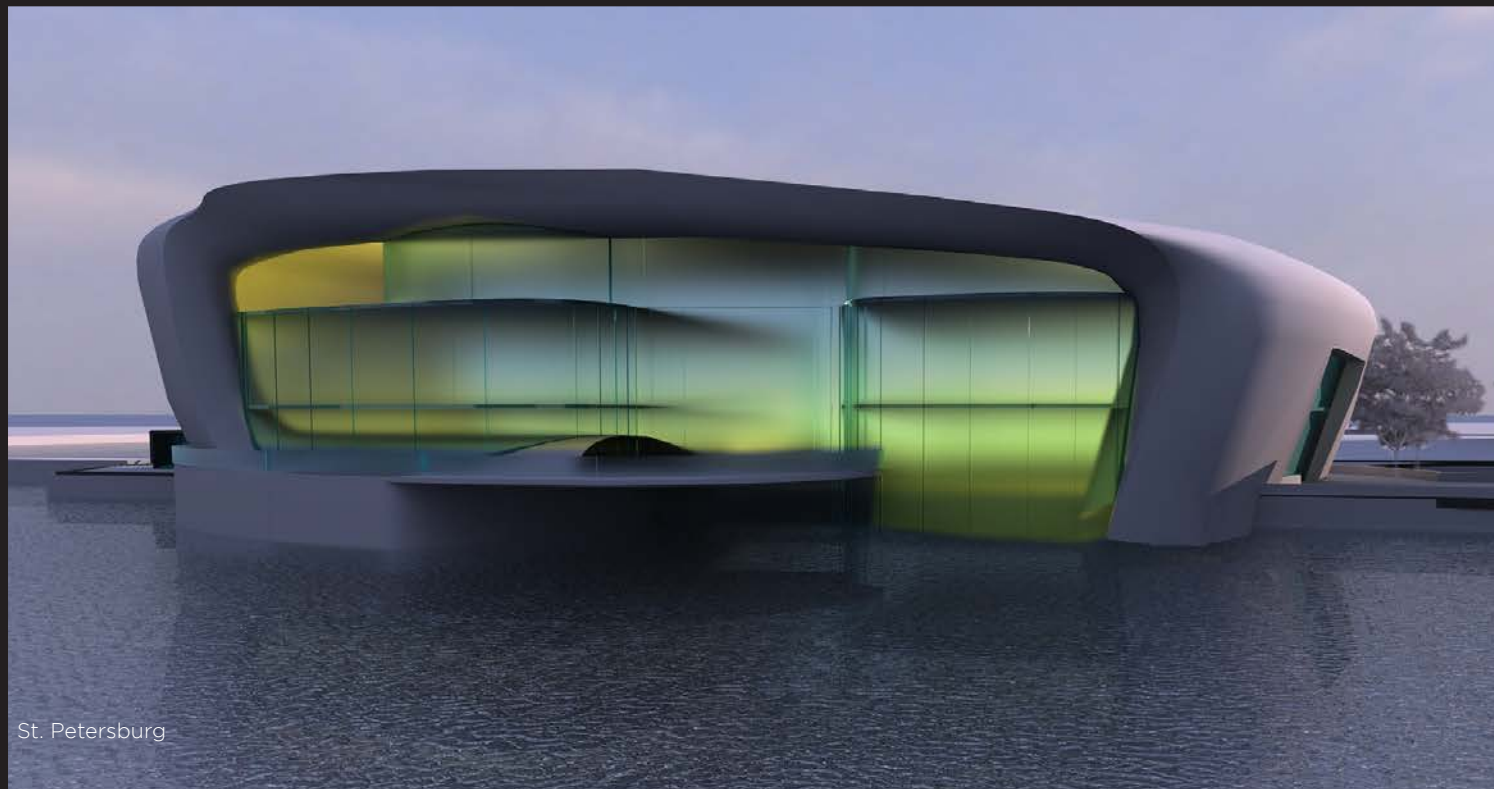
MEP ASSISTANCE

- Reflected ceiling plan
- Ceiling heights
- Water supply layout (Only cold/hot water location, pipe size)
- Drainage layout (Only location, size)
- Ventilation layout (Only location of supply and return, room temperature range, airflow, rate and speed)
- Power (Only location of power supply)
- Sound (Only location speakers and source of sound system, location sound control plate)
- Lighting (Only position and type of light, defining control zones)
- Telephone and data (Only location)

3D RENDERS



Al Mesillah - QATAR



St. Petersburg

HOW WE DO IT

SCHEMATIC

3D VISUALIZATIONS

INTERIOR & ARCHITECTURAL DESIGN

- General layout
- Section(s)/elevation(s)

MEP ASSISTANCE

- Reflected ceiling plan
- Ceiling heights
- Water supply layout (Only cold/hot water location, pipe size)
- Drainage layout (Only location, size)
- Ventilation layout (Only location of supply and return, room temperature range, airflow, rate and speed)
- Power (Only location of power supply)
- Sound (Only location speakers and source of sound system, location sound control plate)
- Lighting (Only position and type of light, defining control zones)
- Telephone and data (Only location)

3D RENDERS



HOW WE DO IT

SCHEMATIC

3D VISUALIZATIONS

INTERIOR & ARCHITECTURAL DESIGN

- General layout
- Section(s)/elevation(s)

MEP ASSISTANCE

- Reflected ceiling plan
- Ceiling heights
- Water supply layout (Only cold/hot water location, pipe size)
- Drainage layout (Only location, size)
- Ventilation layout (Only location of supply and return, room temperature range, airflow, rate and speed)
- Power (Only location of power supply)
- Sound (Only location speakers and source of sound system, location sound control plate)
- Lighting (Only position and type of light, defining control zones)
- Telephone and data (Only location)

3D RENDERS



HOW WE DO IT

SCHEMATIC

3D VISUALIZATIONS

INTERIOR & ARCHITECTURAL DESIGN

- General layout
- Section(s)/elevation(s)

MEP ASSISTANCE

- Reflected ceiling plan
- Ceiling heights
- Water supply layout (Only cold/hot water location, pipe size)
- Drainage layout (Only location, size)
- Ventilation layout (Only location of supply and return, room temperature range, airflow, rate and speed)
- Power (Only location of power supply)
- Sound (Only location speakers and source of sound system, location sound control plate)
- Lighting (Only position and type of light, defining control zones)
- Telephone and data (Only location)

3D RENDERS



Private Villa - DUBAI, UAE

HOW WE DO IT

SCHEMATIC

3D VISUALIZATIONS

INTERIOR & ARCHITECTURAL DESIGN

- General layout
- Section(s)/elevation(s)

MEP ASSISTANCE

- Reflected ceiling plan
- Ceiling heights
- Water supply layout (Only cold/hot water location, pipe size)
- Drainage layout (Only location, size)
- Ventilation layout (Only location of supply and return, room temperature range, airflow, rate and speed)
- Power (Only location of power supply)
- Sound (Only location speakers and source of sound system, location sound control plate)
- Lighting (Only position and type of light, defining control zones)
- Telephone and data (Only location)

3D RENDERS



HOW WE DO IT

SCHEMATIC

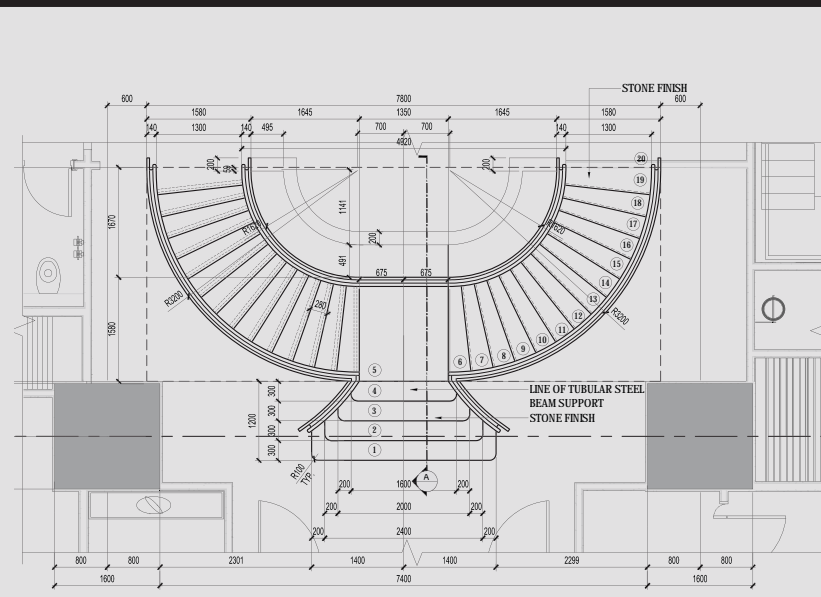
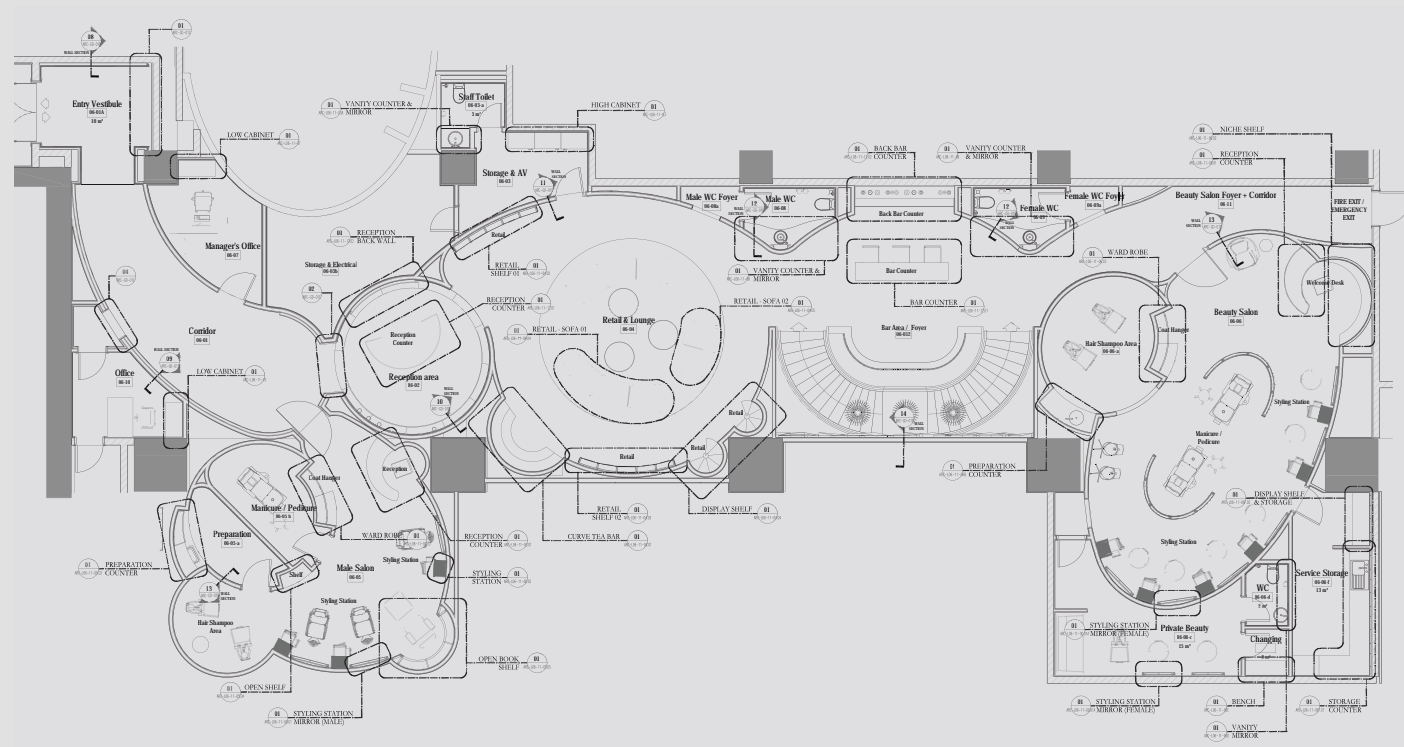
3D VISUALIZATIONS

INTERIOR & ARCHITECTURAL DESIGN

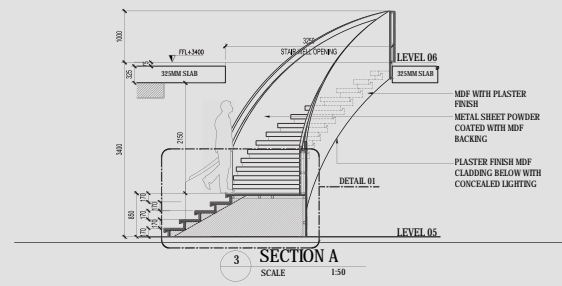
- General layout
- Section(s)/elevation(s)

MEP ASSISTANCE

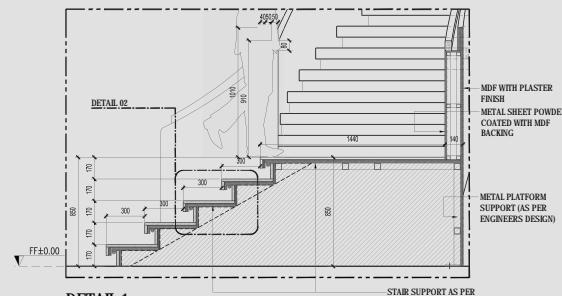
- Reflected ceiling plan
- Ceiling heights
- Water supply layout (Only cold/hot water location, pipe size)
- Drainage layout (Only location, size)
- Ventilation layout (Only location of supply and return, room temperature range, airflow, rate and speed)
- Power (Only location of power supply)
- Sound (Only location speakers and source of sound system, location sound control plate)
- Lighting (Only position and type of light, defining control zones)
- Telephone and data (Only location)



1 STAIR PLAN
SCALE 1:50



3 SECTION A
SCALE 1:50



DETAIL 1
SCALE 1:50

GENERAL LAYOUT

SECTIONS/ELEVATIONS

HOW WE DO IT

SCHEMATIC

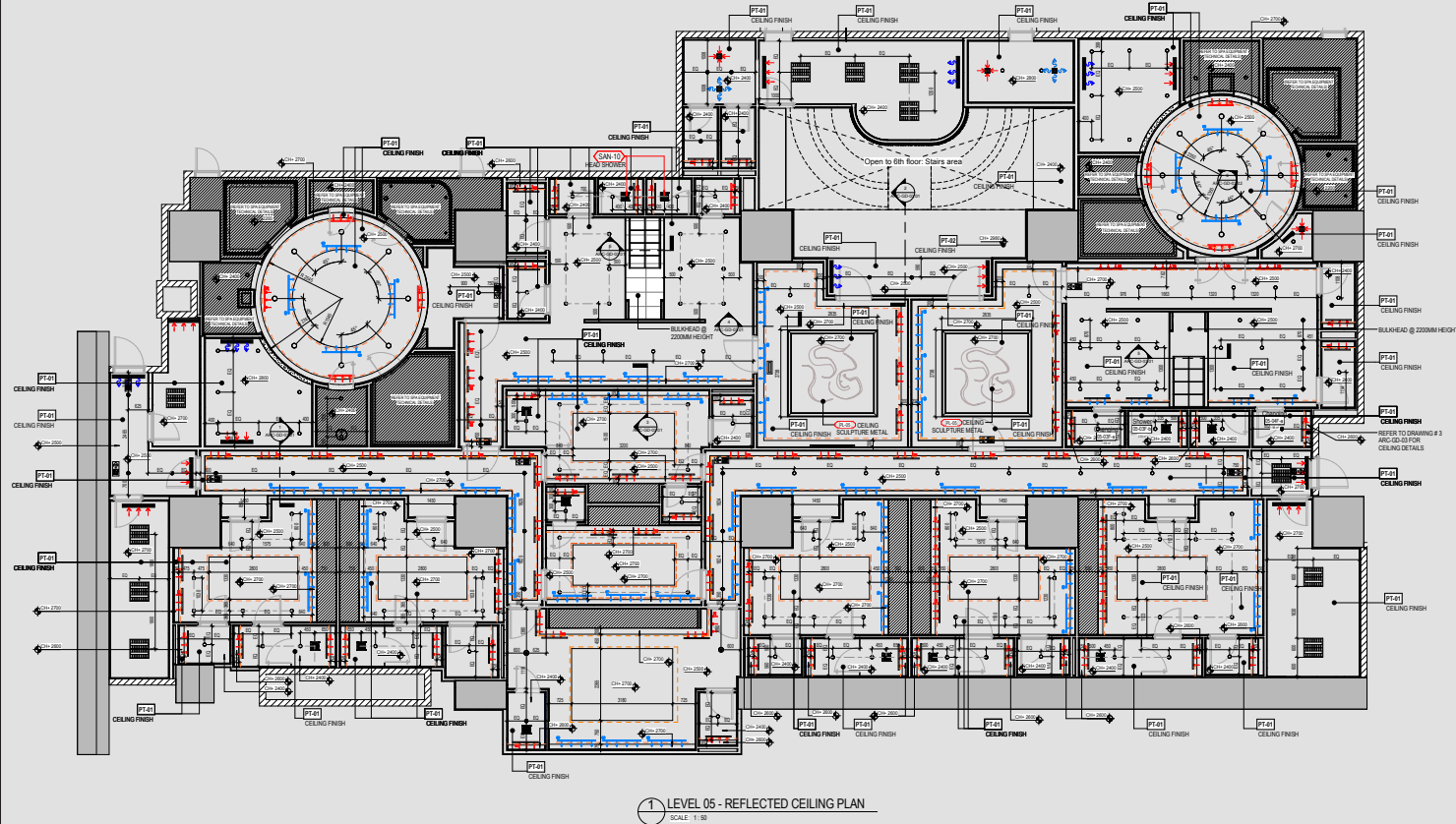
3D VISUALIZATIONS

INTERIOR & ARCHITECTURAL DESIGN

- General layout
- Section(s)/elevation(s)

MEP ASSISTANCE

- Reflected ceiling plan
- Ceiling heights
- Water supply layout (Only cold/hot water location, pipe size)
- Drainage layout (Only location, size)
- Ventilation layout (Only location of supply and return, room temperature range, airflow, rate and speed)
- Power (Only location of power supply)
- Sound (Only location speakers and source of sound system, location sound control plate)
- Lighting (Only position and type of light, defining control zones)
- Telephone and data (Only location)



MEP ASSISTANCE

HOW WE DO IT

DETAILED

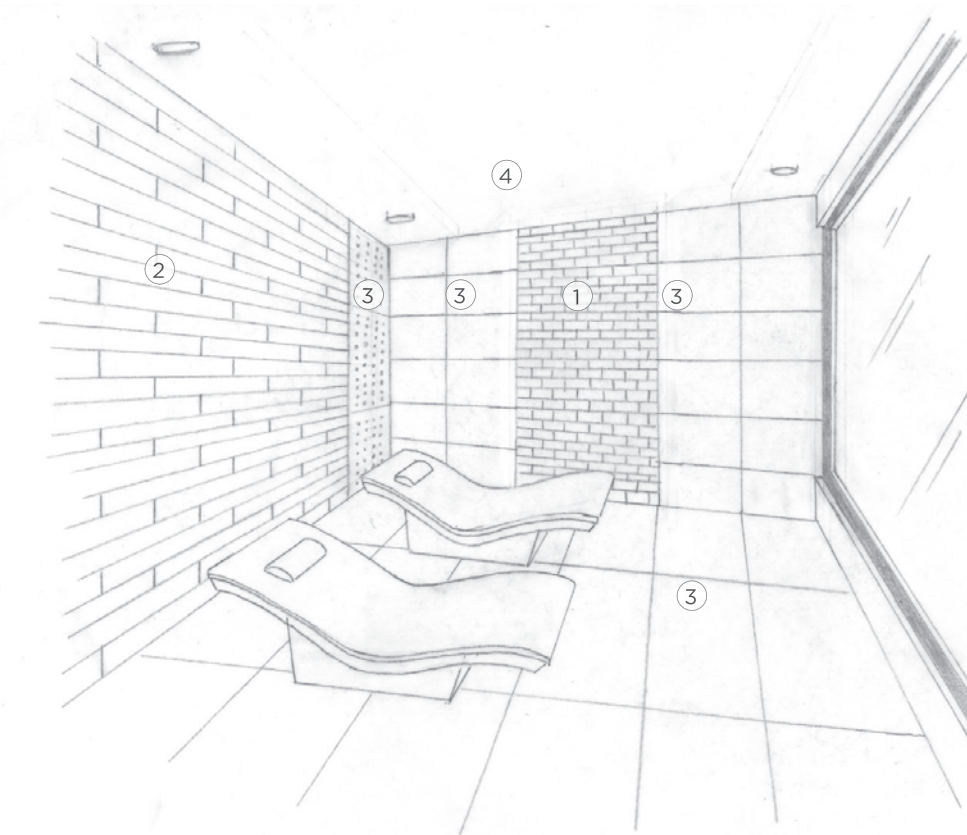
MATERIAL SAMPLE BOARDS

SPECIFICATIONS & SCHEDULES

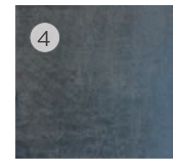
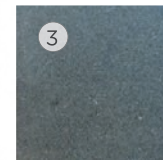
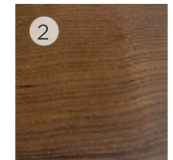
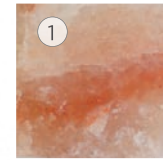
- Architectural & Interior Design
- Spa Equipment Planning

INTERIOR & ARCHITECTURAL DESIGN

- General layout
- Screed layout
- Floors & walls finishes layout(s)
- Furnishing positioning layout (fixed and loose furniture)
- Joinery works incl. ironmongery and glazier works
- Section(s)/elevation(s) and details
- Doors and windows



MATERIALS



- ① Himalayan Salt
- ② Thermo Aspen
- ③ Black absolute Sand blasted
- ④ Armuralia N5573 Polished Plaster

MATERIAL SAMPLES

HOW WE DO IT

DETAILED

MATERIAL SAMPLE BOARDS

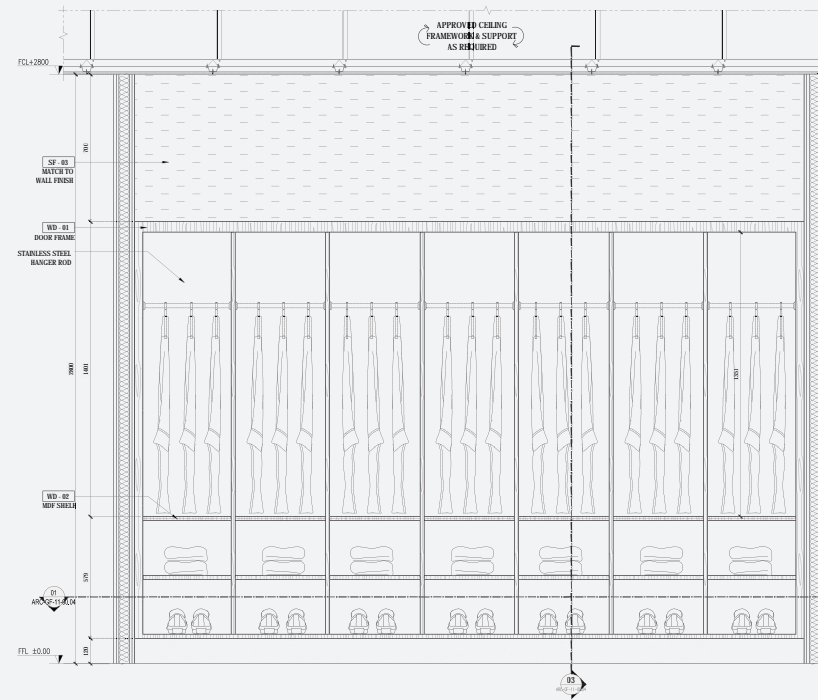
SPECIFICATIONS & SCHEDULES

- Architectural & Interior Design
- Spa Equipment Planning

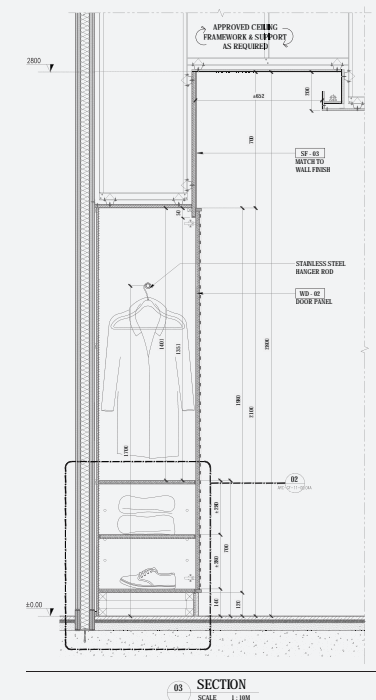
INTERIOR & ARCHITECTURAL DESIGN

- General layout
- Screed layout
- Floors & walls finishes layout(s)
- Furnishing positioning layout (fixed and loose furniture)
- Joinery works incl. ironmongery and glazier works
- Section(s)/elevation(s) and details
- Doors and windows

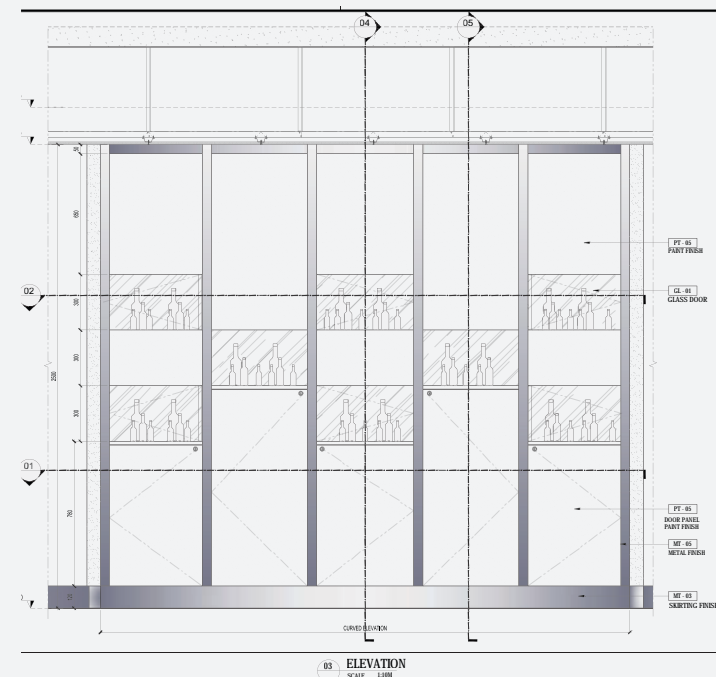
DETAILS



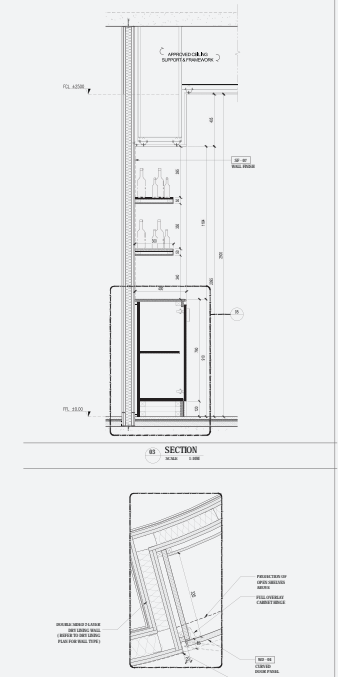
Al Habtoor Polo Ranch - Dubai, UAE



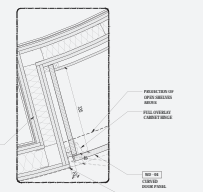
03 SECTION
SCALE: 1:100



03 ELEVATION
SCALE: 1:100



03 SECTION
SCALE: 1:100



St. Regis - CAIRO, EGYPT

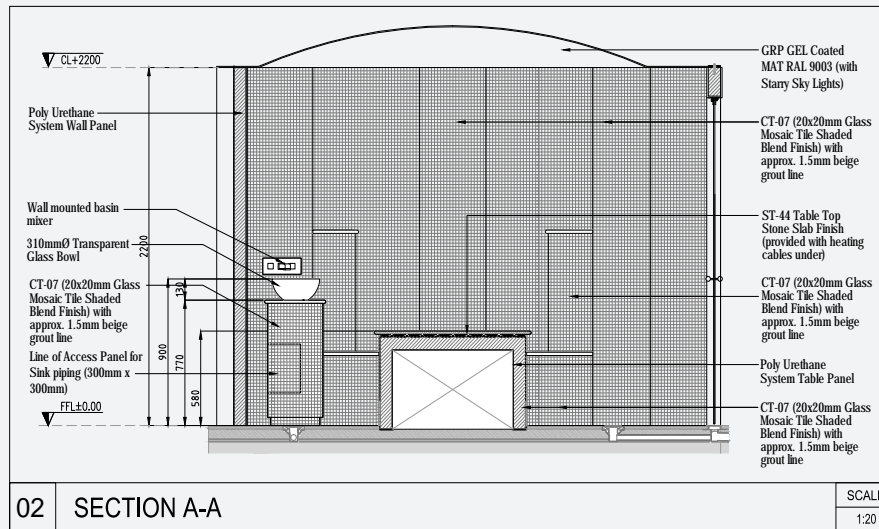
HOW WE DO IT

EQUIPMENT PLANNING

SCHEMATIC ARCHITECTURAL & TECHNICAL EQUIPMENT PLANNING

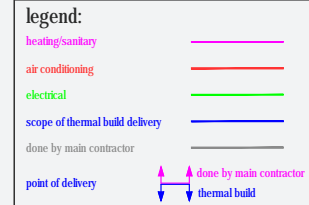
- Overview plan
- MEP interfaces (For sanitary, heating, ventilation and electric will be clearly marked in the plans in order to provide the basis for all connection work related to the MEP)
- Consumption list (relevant energy supply & consumption data for the technical specialist spa units in view of sanitary, heating, ventilation and electrical requirements)

Fours Seasons - ABU DHABI, UAE



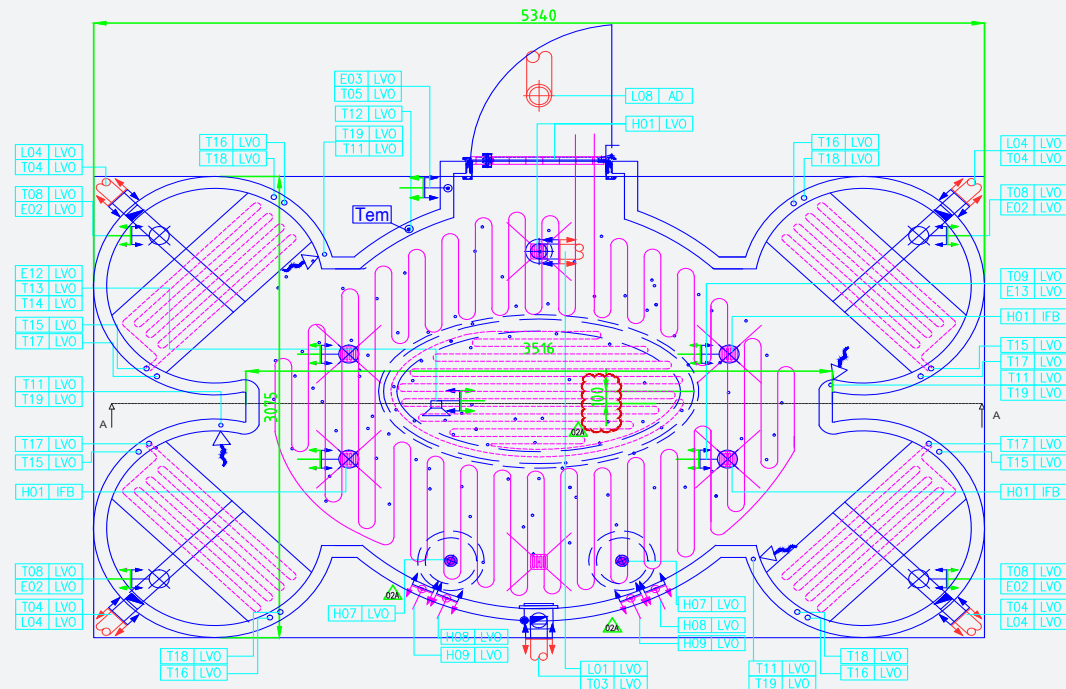
air conditioning		Hamam	
pos.No.	description	dimension / output	construction by
L01	Supply, fit and make all connections to the supply system in the plant, supply air temperature 23-26°C	DN 100/2x 100m ³ /h total 200 m ³ /h	HVAC filter
L02	Supply and fit a volume controller to the supply air system.	By your calculations	HVAC filter
L03	Supply and fit an attenuator for the supply air system.	By your calculations	HVAC filter
L04	Supply, fit and make all connections from extract duct to the extract ventilar PVC). Duct to fall to condensate drain. Extracted moisture air to run direct to outside.	DN 100/2x 100m ³ /h total 200 m ³ /h	HVAC filter
L05	Supply and fit a volume controller for the extract system to be maintain and exercise proof.	By your calculations	HVAC filter
L06	Supply and fit an attenuator for the extract air system	By your calculations	HVAC filter
L07	Supply and fit a condensate drain in the extract duct.	By your calculations	HVAC filter
L08	Supply and make all connections for the extract ducts with adjustable plate valve for the cabin entry.	By your calculations	HVAC filter

heating/sanitary		Hamam	
pos.No.	description	dimension / output	construction by
H01	Supply and fit floor drain complete with trap and all pipework.	waste pipe 1/2" size per floor drain	other
H02	Supply, fit and make all connections of their drain incl outdoor trap in the plant.	By your calculations	other
H03	Supply, fit and make all connections of insulated cold water pipe to the water distributor incl intercept and isolation valve.	Ø 1/2" size handover to thermal build 1" male	other
H04	Supply, fit and make all connections of insulated hot water pipe from distributor to the cabin hand over point.	handover to thermal build 3/4" male 1" Ø hot H. Note: Note the local regulations of the Non return valves!	other
H05	stand pipe (sanifloater)	100°C resistant CU - material	other
H06	Supply, fit and make all connections for a trapped condensate drain pipe.	Gerbert PE ØD40 E035	other
H07	Supply and fit an anti-siphon waste water stand pipe for the sink waste water.	PE - push fit siphon for PE pipe ØD 50 Ø 44 (Ø 45-50mm above FFL)	other
H08	Supply insulated hot water pipe, stop cock and intercept, incl connection at handover point, circulation pipes or heating hand	max. service of the end user Ø hot H. Note: Handover to thermal build 1/2" male	other
H09	Supply insulated cold water pipe, stop cock and intercept, incl connections at handover point.	max. service of the end user Ø hot H. Note: Handover to thermal build 1/2" male	other
H10	Supply insulated cold water pipe, stop cock and intercept, incl connection at handover point.	max. service of the end user Ø hot H. Note: Handover to thermal build 1/2" male	other



DETAILED ARCHITECTURAL & TECHNICAL EQUIPMENT PLANNING

- Architectural & Technical Detail Planning: Architectural Detail Drawings (Plans, Elevations, Floor Details); Technical Detail Drawings (Plans, Sections); Plant room/ technical room details; MEP Drawings of SPA Equipment; Documentation (Energy consumption list, technical data sheets)



HOW WE DO IT WET AREA



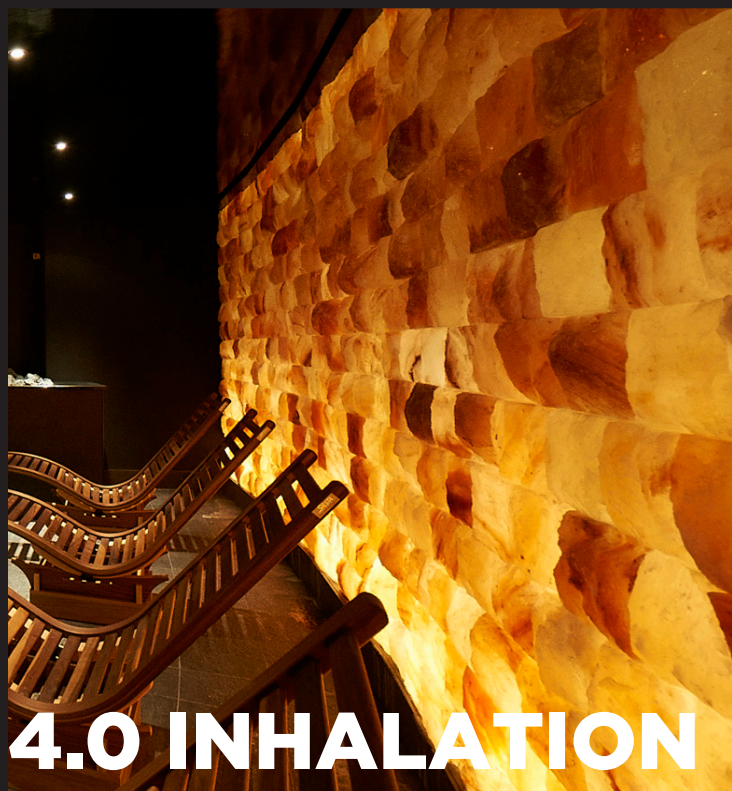
1.0 CLEANSING



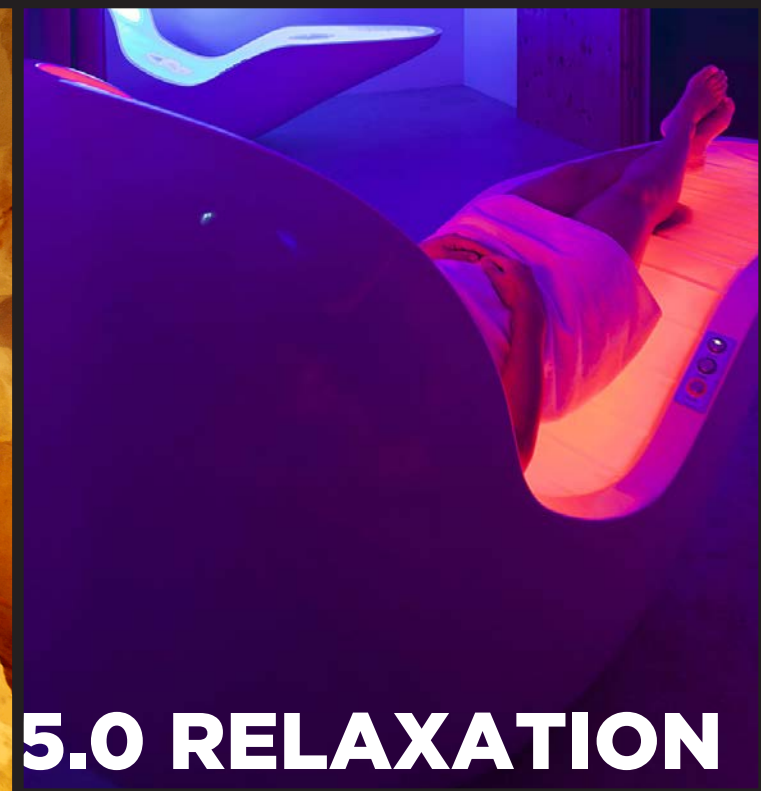
2.0 HEAT & ICE



3.0 WATER



4.0 INHALATION



5.0 RELAXATION

CLEANSING

CLEANSING

HAMMAM
RASOULS
MOROCCAN BATHS
SCRUB ROOMS



Private Villa - DUBAI, UAE



FOR SIX SENSES



Acquaparco Splash e Spa Tamaro - SWITZERLAND



Private Palace - ABU DHABI, UAE

HEAT & ICE EXPERIENCES



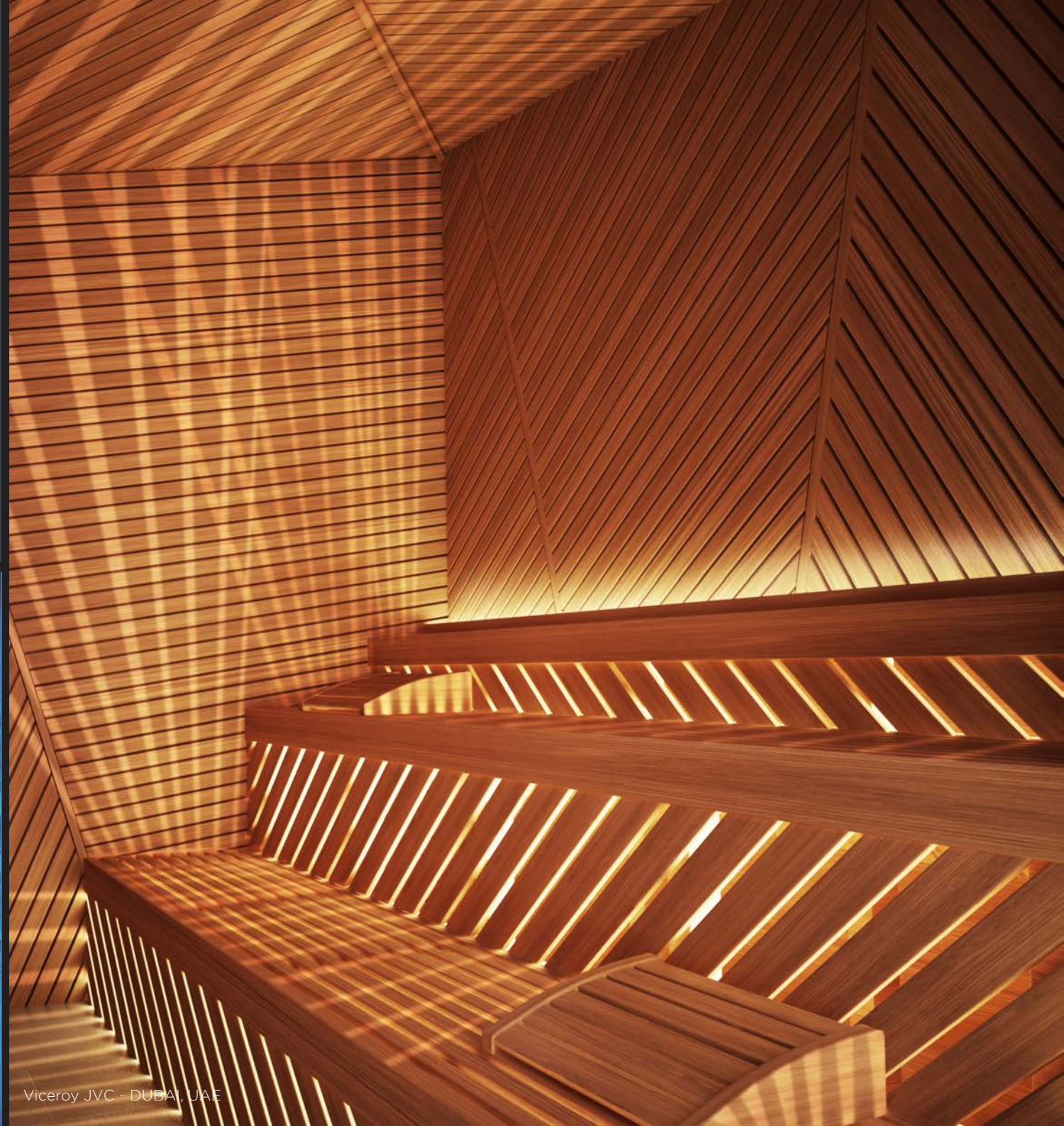
FOR SIX SENSES

HEAT & ICE EXPERIENCES

SAUNAS
INFRARED CABINS
STEAM ROOMS
ICE FOUNTAINS
COLD/SNOW ROOMS



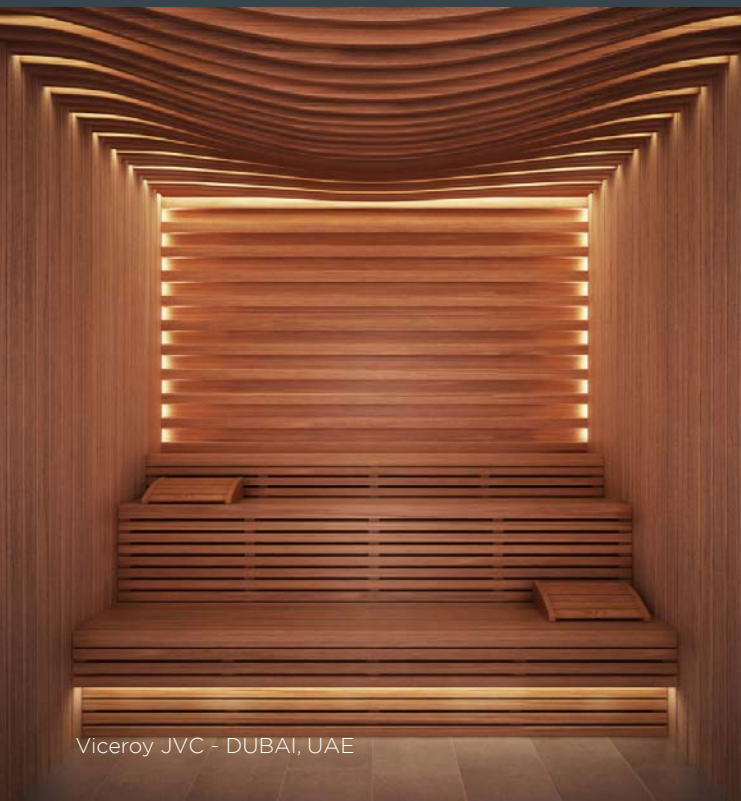
St Regis - CAIRO, EGYPT



Viceroy JVC - DUBAI, UAE

HEAT & ICE EXPERIENCES

SAUNAS
INFRARED CABINS
STEAM ROOMS
ICE FOUNTAINS
COLD/SNOW ROOMS



Viceroy JVC - DUBAI, UAE



Private Palace - ABU DHABI, UAE

WATER FEATURES



WATER FEATURES

VITALITY POOLS

PLUNGE POOLS

FLOTATION POOLS

KNEIPP THERAPIES

EXPERIENCE SHOWERS

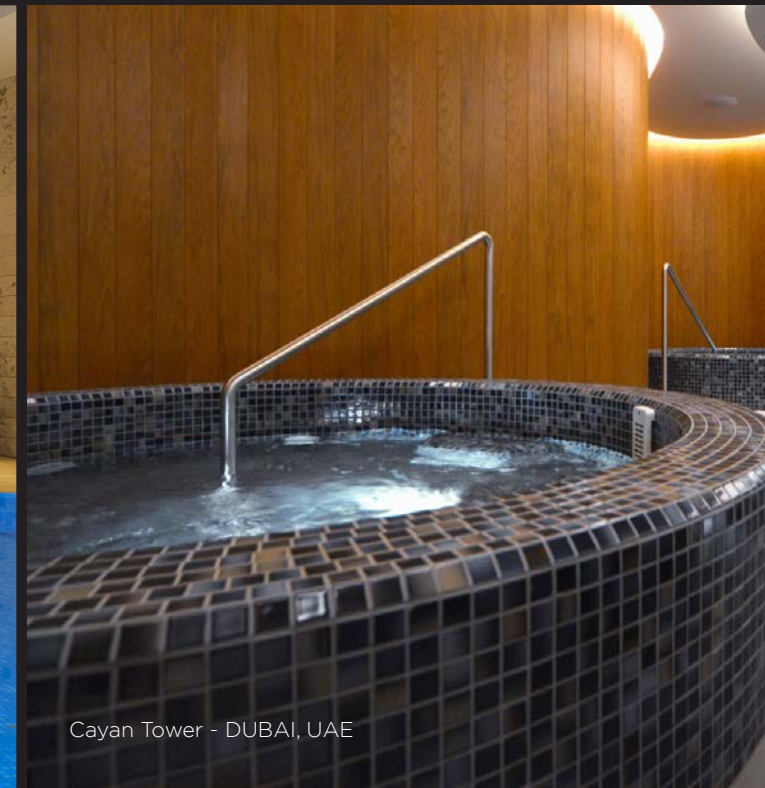
RIVER WALKS



Acquaparco Splash e Spa Tamaro - SWITZERLAND



Sackmann Hotel - GERMANY



Cayan Tower - DUBAI, UAE

WATER FEATURES

VITALITY POOLS

PLUNGE POOLS

FLOTATION POOLS

KNEIPP THERAPIES

EXPERIENCE SHOWERS

RIVER WALKS



Al Mleiha B&B - SHARJAH, UAE



Viceroy JVC - DUBAI, UAE

INHALATION ROOMS

The image shows the interior of an inhalation room. The walls are constructed from large, irregular, light-colored stone blocks, which are illuminated from below, creating a warm, golden glow. Several wooden lounge chairs with curved backs and slatted seats are arranged in rows on a dark floor. In the background, a dark, rectangular structure is visible, possibly a water feature or a counter. The overall atmosphere is serene and relaxing.

INHALATION ROOMS

INHALATION ROOMS:
MINERAL (SALT)
LOCAL HERBS OR PLANTS



Aqua Dome - TYROL, AUSTRIA



Hotel Bayerwaldhof - GERMANY



Al Mesillah - QATAR

MEDITATION & RELAXATION

MEDITATION & RELAXATION

SENSORY LOUNGERS

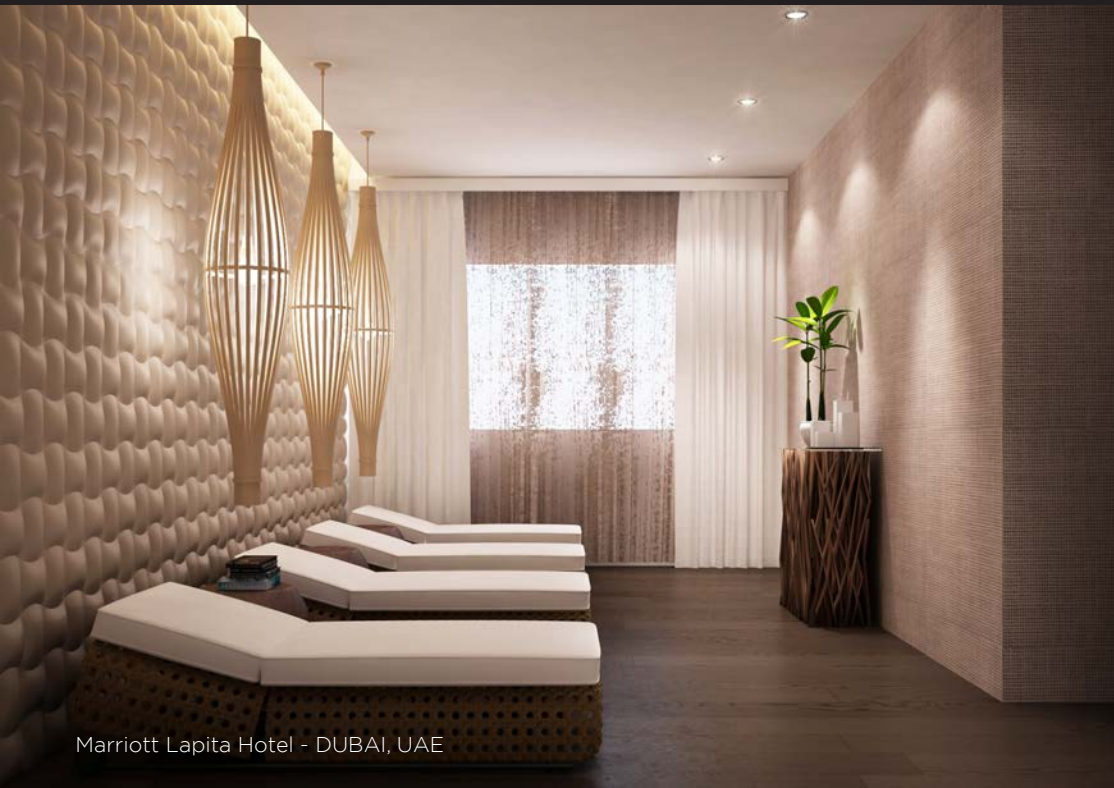
SLEEPING PODS

MEDITATION

HEATED LOUNGERS



Four Seasons - GUANGHZOU, CHINA



Marriott Lapita Hotel - DUBAI, UAE



Alpen SPA - TYROL, AUSTRIA

thewellness

THE WELLNESS

INTERNATIONAL BUSINESS TOWER, BUSINESS BAY, OFFICE 1406/1407 | PO BOX 191175 | DUBAI | UAE
T +971 (0) 43629625 | F +971 (0) 43629223 | WWW.THEWELLNESS.AE